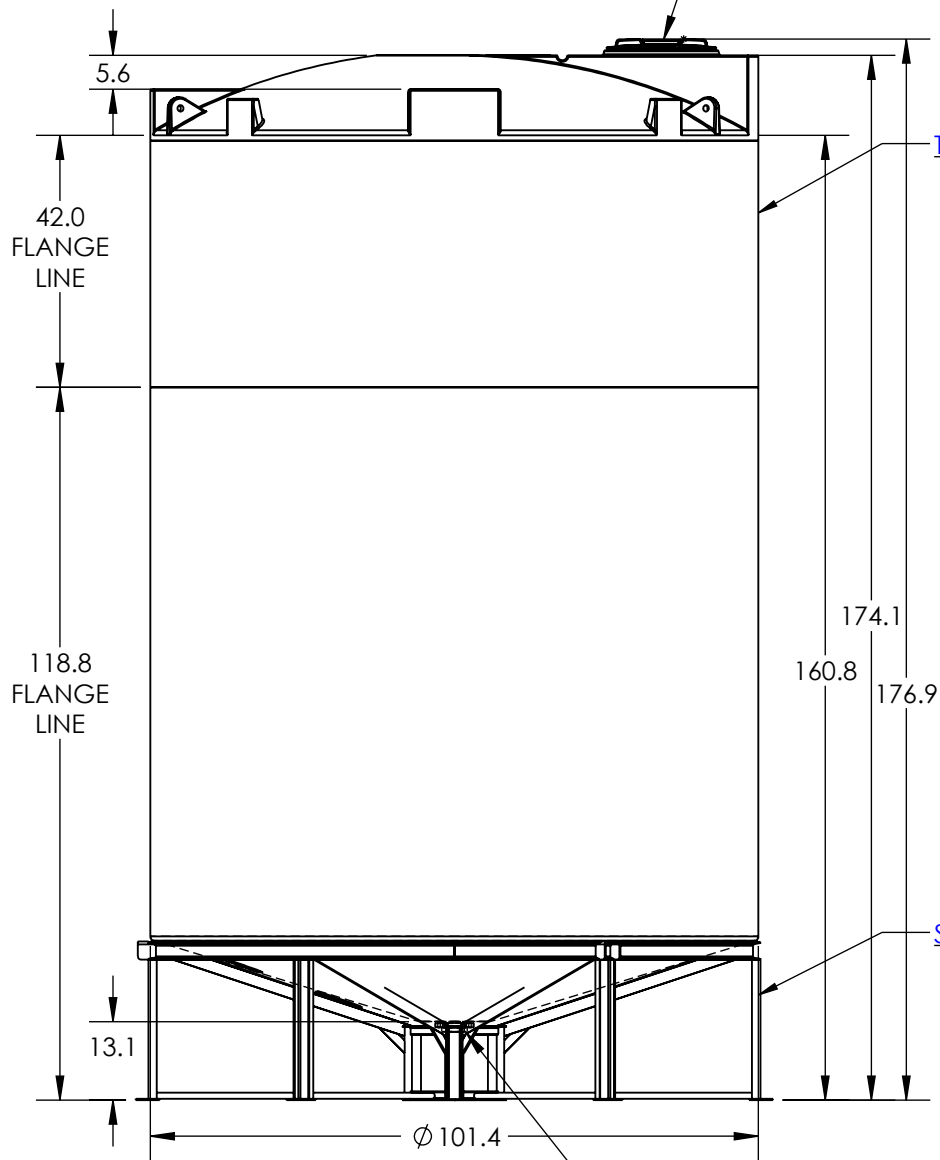


18" PE THREADED/VENTED
MANWAY w/ 15" ACCESS



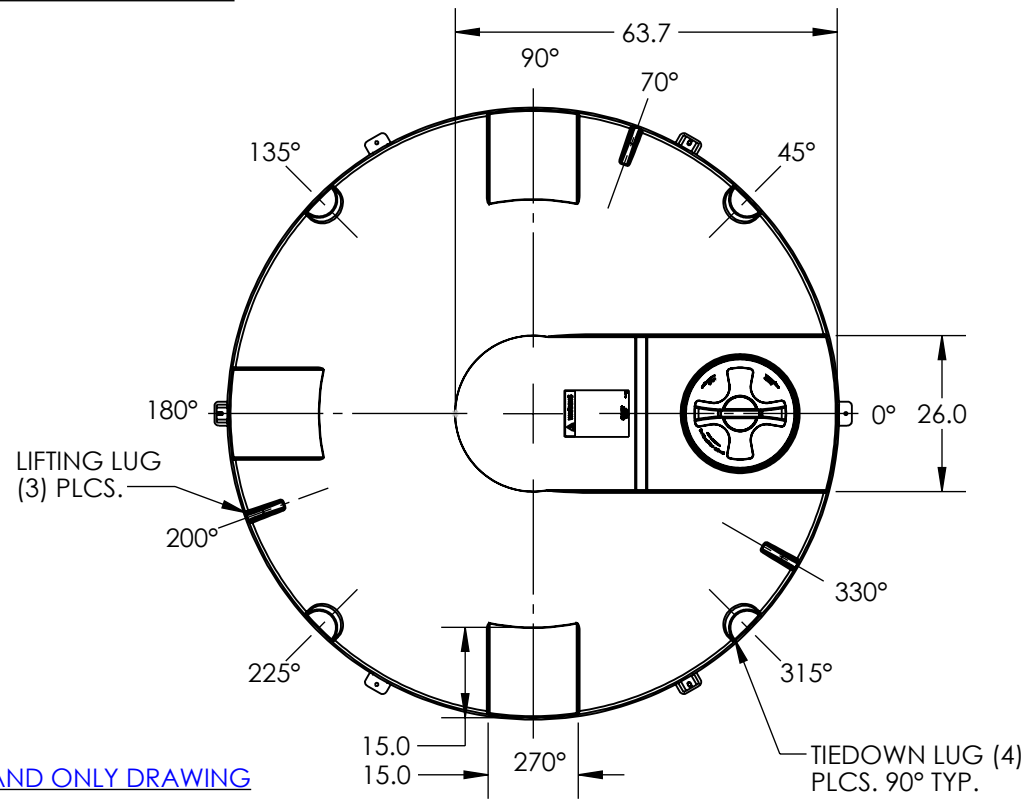
TANK ONLY DRAWING

STAND ONLY DRAWING

LIFTING LUG
(3) PLCS.

TIEDOWN LUG (4)
PLCS. 90° TYP.

3" PP TXT BOLTED BOTTOM
DRAIN FITTING w/ EPDM GASKET



***ALL EXTERNAL PIPING MUST BE INDEPENDENTLY SUPPORTED.**
***ONLY BASE FITTINGS TO BE LEFT INSTALLED AT TIME OF SHIPMENT PER SII PROCEDURE.**
ALL DIMENSIONS ARE IN INCHES, NOMINAL, & SUBJECT TO CHANGE WITHOUT NOTICE.
ALL DIMENSIONS ON ROTATIONAL MOLDED PARTS ARE SUBJECT TO A ± 3% TOLERANCE.

DO NOT SCALE		DRAWN BY	SII SNYDER INDUSTRIES, INC.	TITLE:	REVISION
STATUS: Released		IGG		5000 GALLON 15° CONE BOTTOM TANK W/STAND	B
© SNYDER INDUSTRIES, INC., 2019					SHEET
ALL DIMENSIONS, DESIGNS, AND INFORMATION ON THIS PRINT MUST BE CONSIDERED PROPRIETARY TO SNYDER INDUSTRIES, INC. AND MAY NOT BE USED, COPIED, OR DISTRIBUTED WITHOUT WRITTEN PERMISSION OF AN OFFICER (OR HIS AGENT) OF THE FIRM.				(402) 467-5221 www.snydernet.com	1 OF 1
PART NO.			ENG. ID.		
8050200C & 48500000			A014310		