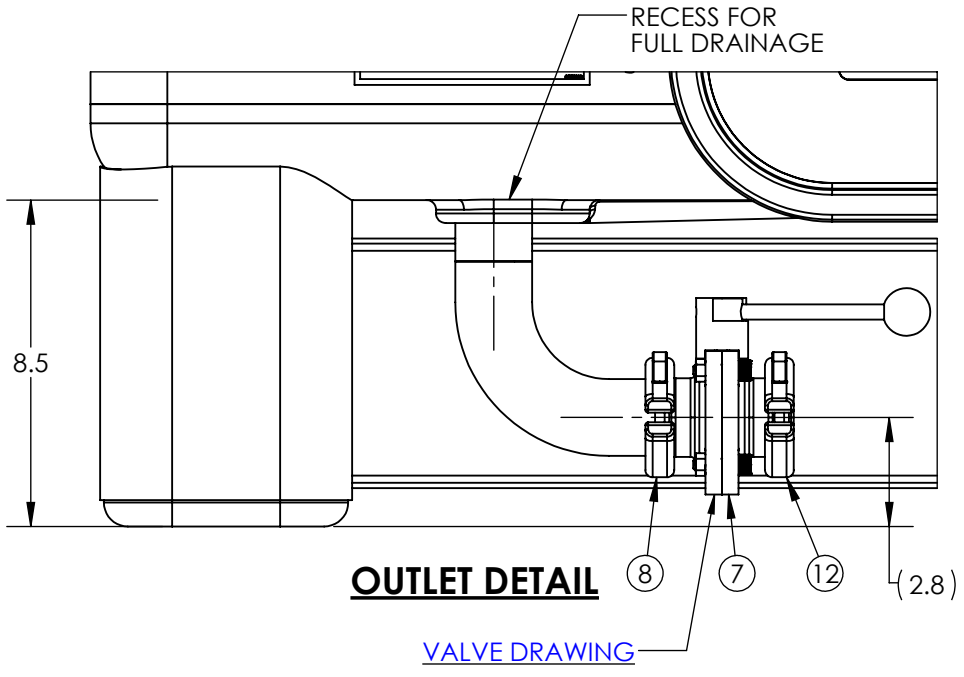
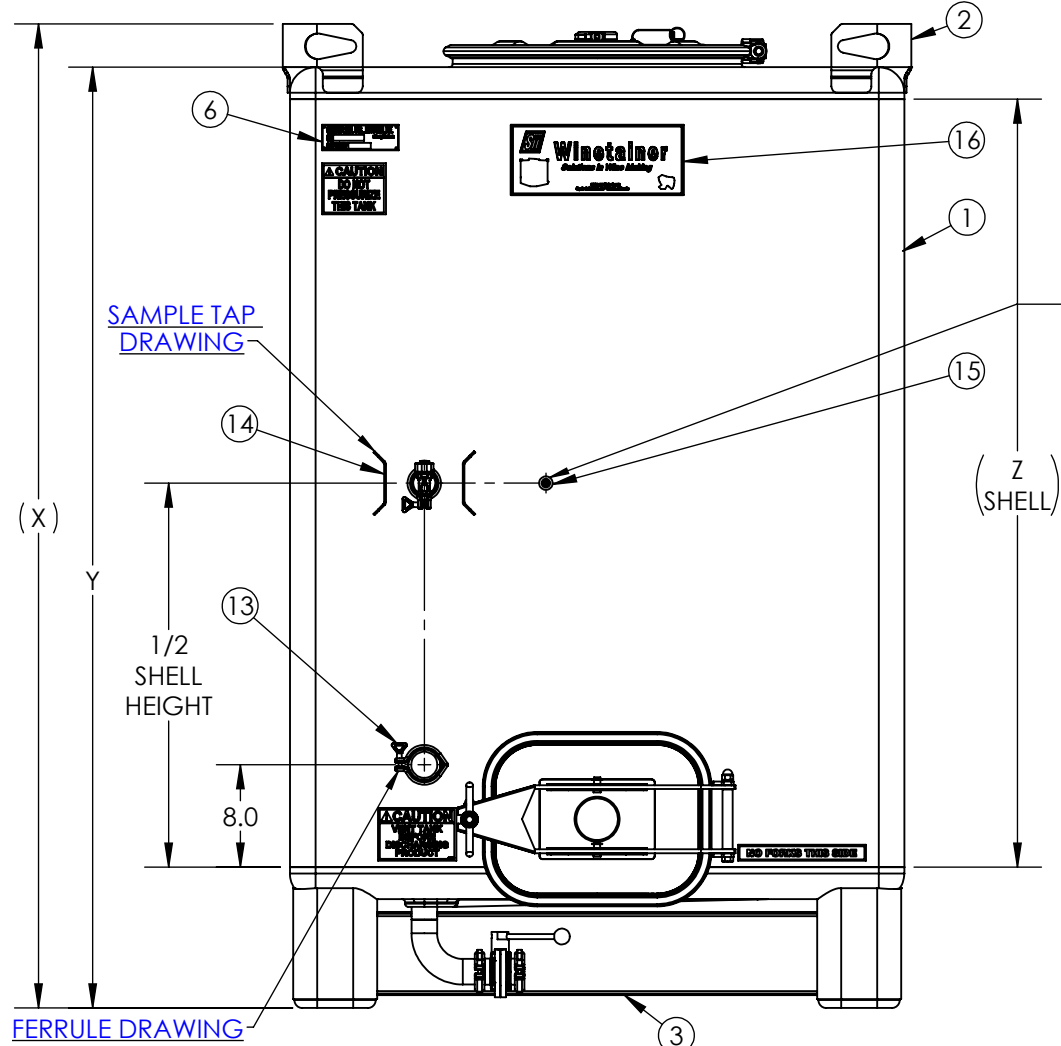
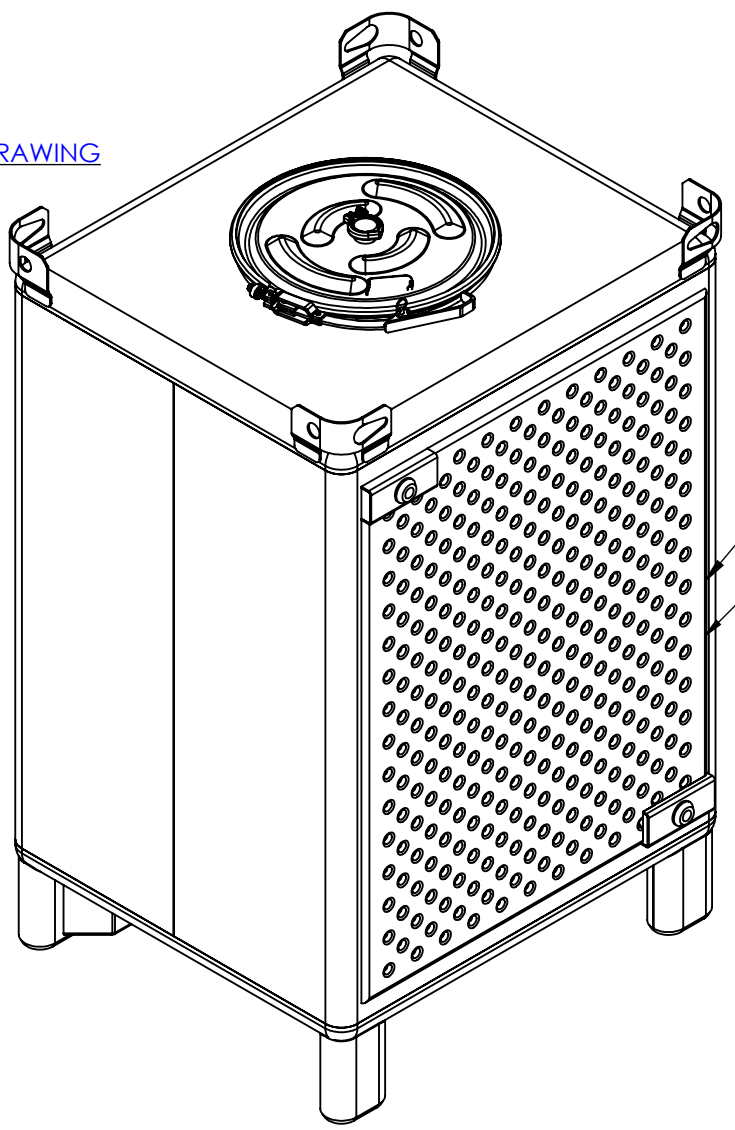
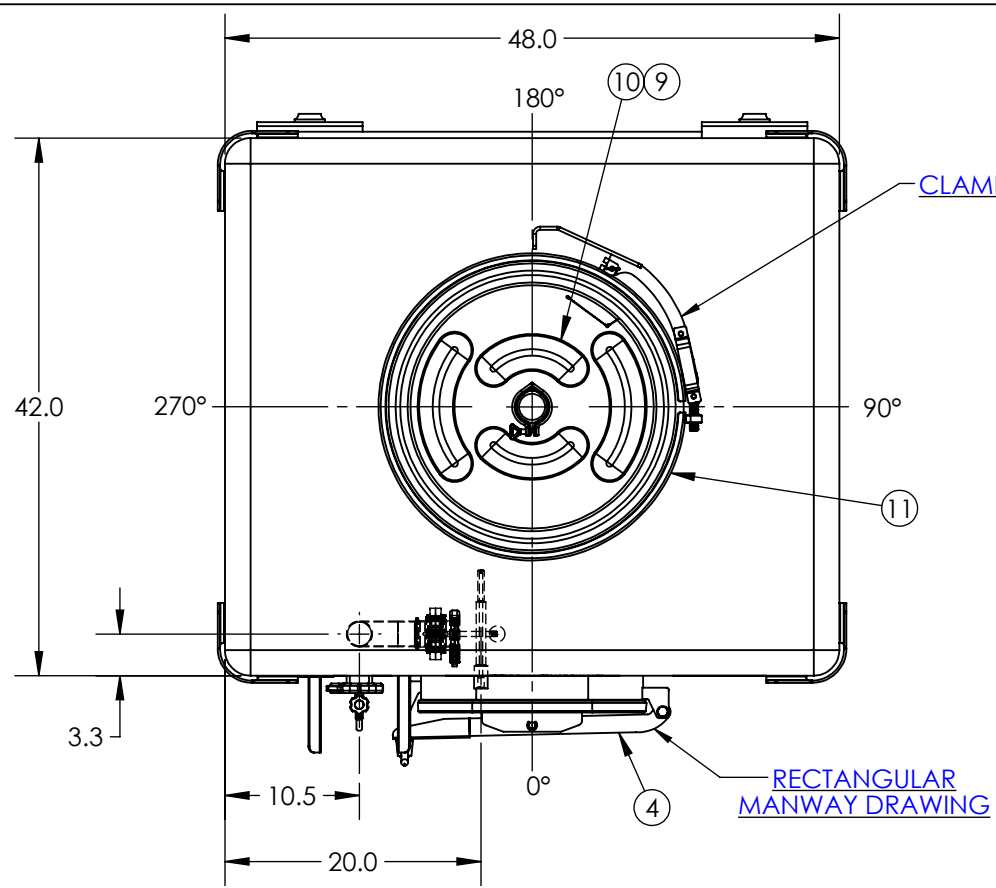


PART NUMBER	GALLONAGE	'X' DIMENSION	'Y' DIMENSION	'Z' DIMENSION
6984000B	126	29.10	25.50	12.00
6984000B	245	41.00	37.50	24.00
6984300B	350	53.00	49.50	36.00
6984500B	550	76.88"	73.50"	60.00"
6984000B	793	SEE DRAWING	---	---



NOTES:

- TANK IS DESIGNED AND CONSTRUCTED IN ACCORDANCE WITH U.N. SPECIFICATIONS.
- TANK AND HEADS CONSTRUCTION OF 10 GA MATERIAL.
- TANK IS AIR TESTED AT 3 PSI.
- ALL WELDS CLEANED OF SLAG AND SPATTER.
- TANK INTERIOR AND EXTERIOR ARE ELECTRO-CLEANED.
- 550 GAL 304SS SHOWN WITH STANDARD OPTIONAL ACCESSORIES.
- OTHER SIZES/OPTIONS AVAILABLE.
- ACCESSORIES WILL BE LOCATED AS SHOWN UNLESS OTHERWISE SPECIFIED AND APPROVED BY CUSTOMER.

ITEM NO.	QTY.	PART NUMBER	DESCRIPTION
16	1	34702466	DECAL PKG SII WINETAINDER
15	1	35901961	THERMOWELL 1/2NPS 7.5 INSERTION 304SS
14	1	34901225	WELD 1-1/2IN FERRULE/2-PC GUARD W/TAP
13	1	34901223	WELD 2IN FERRULE W/CLOSURE SILICONE
12	1	34702314	ASM 2IN TRI-C SANI CLOSURE SILICONE
11	1	35901932	ASM 1PC LEVER LOCK CLAMP RING 22-5/16 SS
10	1	34900081	ASM LID 22-5/16 304SS TRI-C FTG SILC
9	1	33100727	GASKET 22-5/16 DIA MULTISEAL EPDM WHITE
8	1	35300459	CLAMP 2IN HD 304SS TRI-C
7	1	35400251	VALVE 2IN BF SS/SILICONE TRI-C
6	1	36500080	TAG NON-UN SN 304SS
5	1	34900241	ASM DIMPLE JACKET 550G W/1IN PORTS SS
4	1	35902147	MANWAY RECT 17 X 13 #166-100 SS
3	1	35901860	VALVE GUARD 6-1/2 X 42 X 10GA 304SS
2	1	34900029	WELD ASM LIFT LUGS SII STD 304SS
1	1	34900238	TK 550 SPRTNR 304SS SANI-OUT NO-BUNG

ITEM NO.	QTY.	PART NUMBER	DESCRIPTION	REVISION
DO NOT SCALE		DRAWN BY		
Released		SB		
© SNYDER INDUSTRIES, LLC, 2019				
<small>ALL DIMENSIONS, DESIGNS, AND INFORMATION ON THIS PRINT MUST BE CONSIDERED PROPRIETARY TO SNYDER INDUSTRIES, LLC, AND MAY NOT BE USED, COPIED, OR DISTRIBUTED WITHOUT WRITTEN PERMISSION OF AN OFFICER (OR HIS AGENT) OF THE FIRM.</small>				
			ASM STD WINETAINDER	
(402) 467-5221 www.snydermei.com			SEE CHART	
REVISION			SHEET 1 OF 1	
PART NO.			ENG. ID.	
SEE CHART			A003804	

ALL DIMENSIONS ARE IN INCHES, NOMINAL, & SUBJECT TO CHANGE WITHOUT NOTICE.
 ALL DIMENSIONS ON ROTATIONAL MOLDED PARTS ARE SUBJECT TO A ± 3% TOLERANCE.